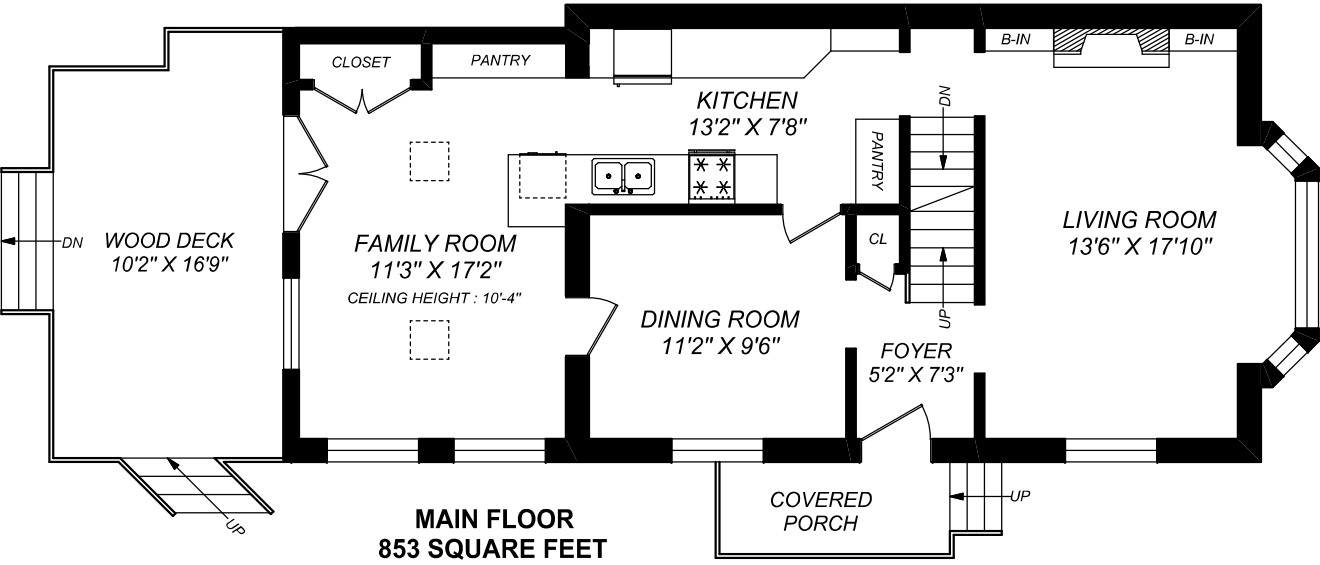
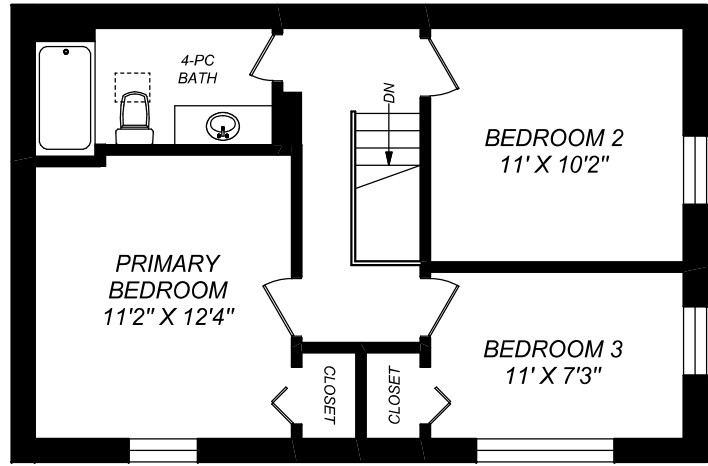


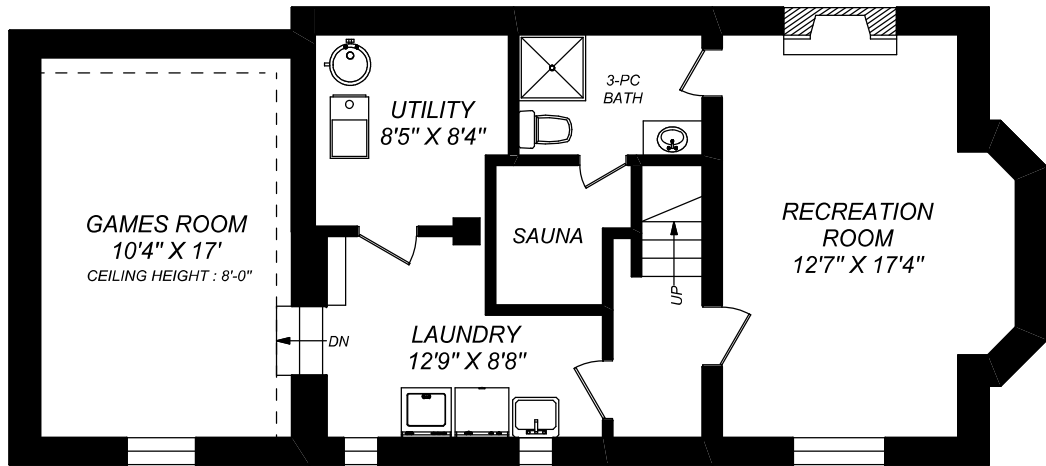
3 WHITEWOOD ROAD



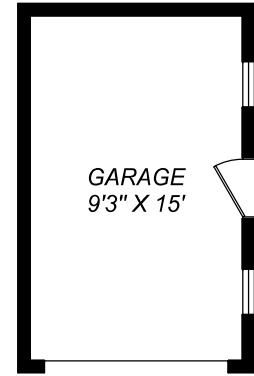
MAIN FLOOR
853 SQUARE FEET
 CEILING HEIGHT : 8'-2"



SECOND FLOOR
606 SQUARE FEET
 CEILING HEIGHT : 8'-0"



LOWER LEVEL
853 SQUARE FEET
 CEILING HEIGHT : 6'-5"



0 5
 FEET
truPlan
 416 573 2096
 E & O.E.
 Floor plan may not be 100% accurate.